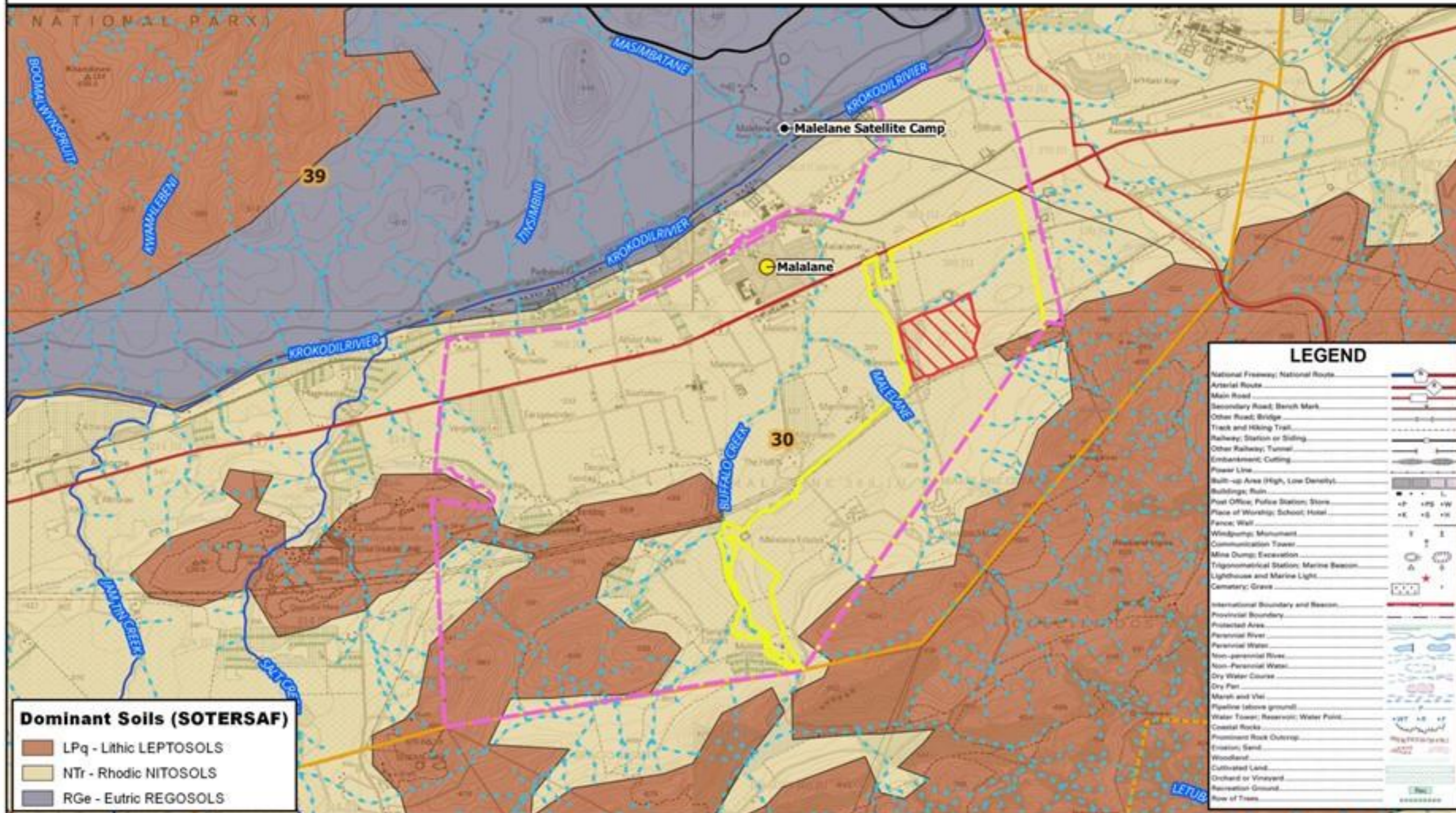


Khanyazwe Flexpower Gas to Power Project in Nkomazi Local Municipality, Ward 30, Mpumalanga Province



Dominant Soils (SOTERSAF)

	LPq - Lithic LEPTOSOLS
	NTr - Rhodic NITOSOLS
	RGe - Eutric REGOSOLS

LEGEND

	National Freeway; National Route
	Arterial Route
	Main Road
	Secondary Road; Bench Mark
	Other Road; Bridge
	Track and Hiking Trail
	Railway; Station or Stopping
	Other Railway; Tunnel
	Embankment; Cutting
	Power Line
	Built-up Area (High, Low Density)
	Buildings; Ruin
	Post Office; Police Station; Store
	Place of Worship; School; Hotel
	Fence; Wall
	Windpump; Monument
	Communication Tower
	Mine Dump; Excavation
	Trigonometrical Station; Marine Beacon
	Lighthouse and Marine Light
	Cemetery; Grave
	International Boundary and Beacon
	Provincial Boundary
	Protected Area
	Perennial River
	Non-perennial River
	Non-Perennial Water
	Dry Water Course
	Dry Pan
	Marsh and Vlei
	Pipeline (above ground)
	Water Tower; Reservoir; Water Point
	Coastal Rocks
	Prominent Rock Outcrop
	Erosion; Sand
	Woodland
	Cultivated Land
	Orchard or Vineyard
	Recreation Ground
	Now of Trees

Legend

	Town		Non-Perennial River		RE 1/389 Boundary
	Village		Main Roads		Malelane 389 JU Farm
	Perennial River		Khanyazwe Flexpower		Municipal Wards

Dominant Soils Map

Date: 22 January 2023

0 1 2 km

Projection: Transverse Mercator (31°E)
Datum: WGS 84
Compiled by: Sinenjongo Spamla
Scale = 1: 50 000

NSOVO
ENVIRONMENTAL CONSULTING

Nsovo Environmental Consulting
Telephone: 087-803-9294
Email: Admin@nsovo.co.za
Website: www.nsovo.co.za
40 Lyncon Rd, Carlswald,
Midrand, 1684.